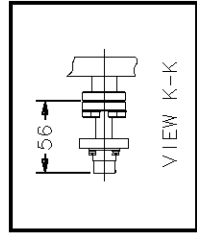
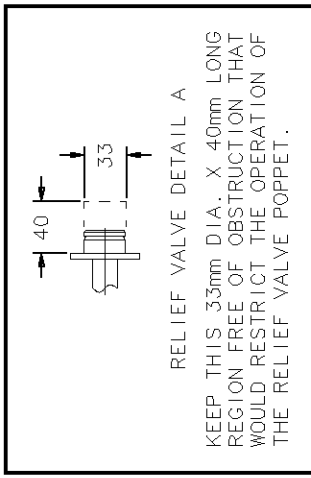


APPLICABLE SPECIFICATIONS:
 GENERAL PRODUCT SPECIFICATIONS - TBD
 CONFIGURATION SPECIFICATION - 265120A080
 SALES WORKSHEET - CP-8 1001

SHOWN WITH MOST COMMON ACCESSORIES
 REFER TO SALES WORKSHEET FOR OPTIONAL ACCESSORIES.



DIMENSIONS ARE IN MILLIMETERS (mm) UNLESS OTHERWISE SPECIFIED.

MATERIAL LEGEND	MATERIAL
DESIGNATION	ST. STL.
	ALUMINUM
	COPPER, OFHC
Sumitomo <small>(SHI) CRYOGENICS OF AMERICA, INC.</small>	
NO.	265120A080I00-C
SHEET	1 OF 1

PROJECT: cryopumps_cp8		TITLE	
OUTLINE DRAWING		CP-8 CRYOPUMP ASSEMBLY	
50/60 HZ		ISO 200	
REV.	CRSP NO.	DATE	BY
	15 SEP 06	JPK	YB
		RGS	ERS
		QUAL.	ENGR.

PROPRIETARY NOTICE: THIS DOCUMENT IS THE PROPERTY OF SUMITOMO (SHI) CRYOGENICS OF AMERICA, INC., AND SHALL NOT, WITHOUT THE EXPRESS WRITTEN PERMISSION OF SCAI, BE REPRODUCED OR COPIED IN WHOLE OR IN PART BY ANY PERSON OUTSIDE OF SCAI OR, IF LOANED BY SCAI TO SUCH PERSON, SHALL NOT BE USED FOR FURNISHING INFORMATION TO ANY THIRD PARTY OR FOR ANY PURPOSE OTHER THAN THAT FOR WHICH IT IS LOANED.
 FORM NO. D0102089-A Rev. B (3/00)